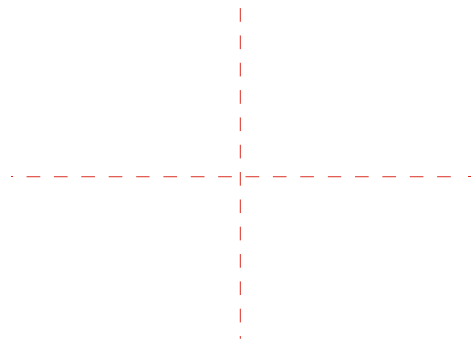


AC-DC  
15W SP15

SP15

AC-DC  
15W SP15-D(T) XXY

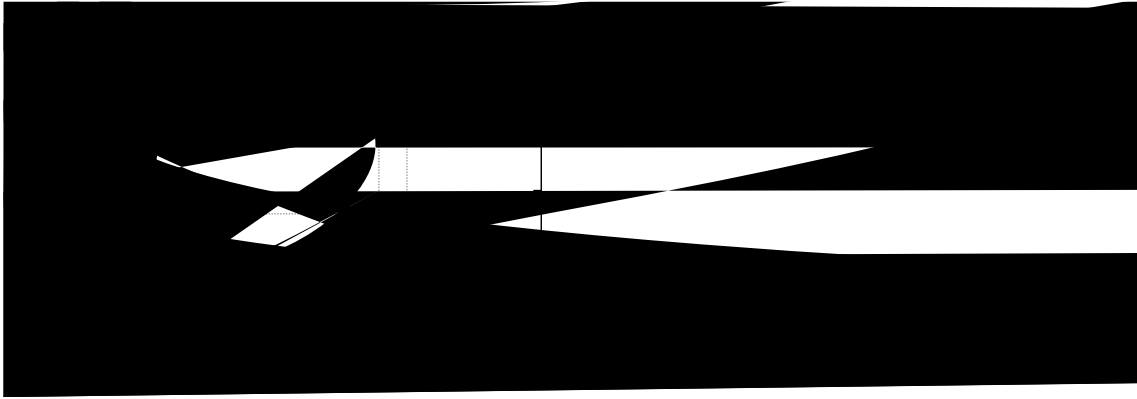
		IEC/EN 61000-4-2 level 4 Contact ± 8kV/Air ± 15kV	"	"
		IEC/EN 61000-4-3	"	"
		IEC/EN 61000-4-4 level 4 4kV	"	"
		IEC/EN 61000-4-5 level 4 - 2kV/ - 4kV		
	MTBF	200K hrs min. MIL-HDBK-217F(25 )		
		62*45*23mm (L*W*H)		
	1.	TA=25 75% 230VAC		
	2.	0.1uF 47uF 20kHz		
	3.			
	4.	TVS		
	5.	SP15-DXXY XX SP15-DXX SP15-TX 5V 20% 80%		



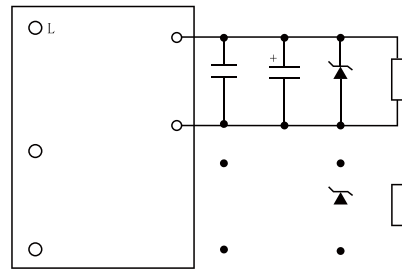
mm[inch]

± 0.10[± 0.004]

± 0.5mm



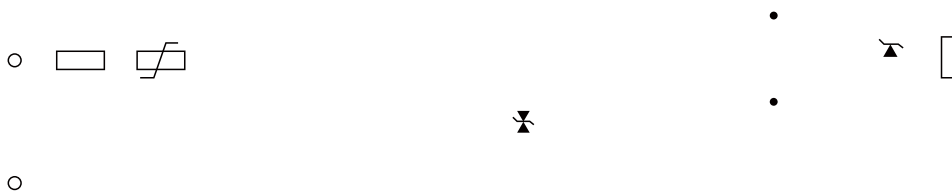
SP15-DXXY



SP15-DXX



SP15-TX



1.

EMC

EMC

c

1